



SPOOKY

PREVIEW

RIDDLES

WHAT DO YOU CALL A GHOST'S
MOTHER AND FATHER?

PREVIEW



TRANSPARENTS!

PREVIEW

WHAT KIND OF MUSIC
DO MUMMIES LISTEN TO?

PREVIEW

2



WRAP MUSIC!

YEAH

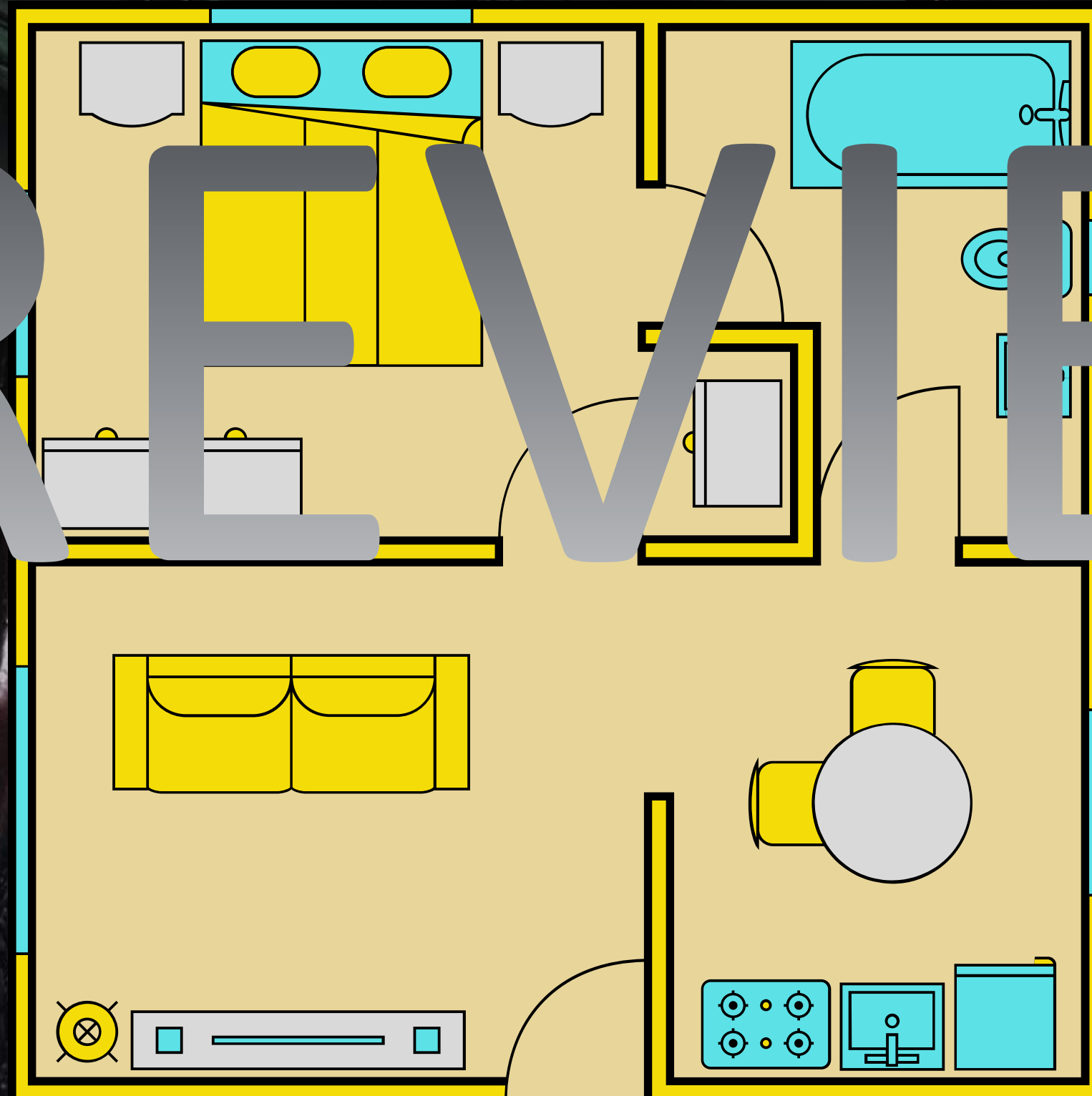
YEAH

PREVIEW



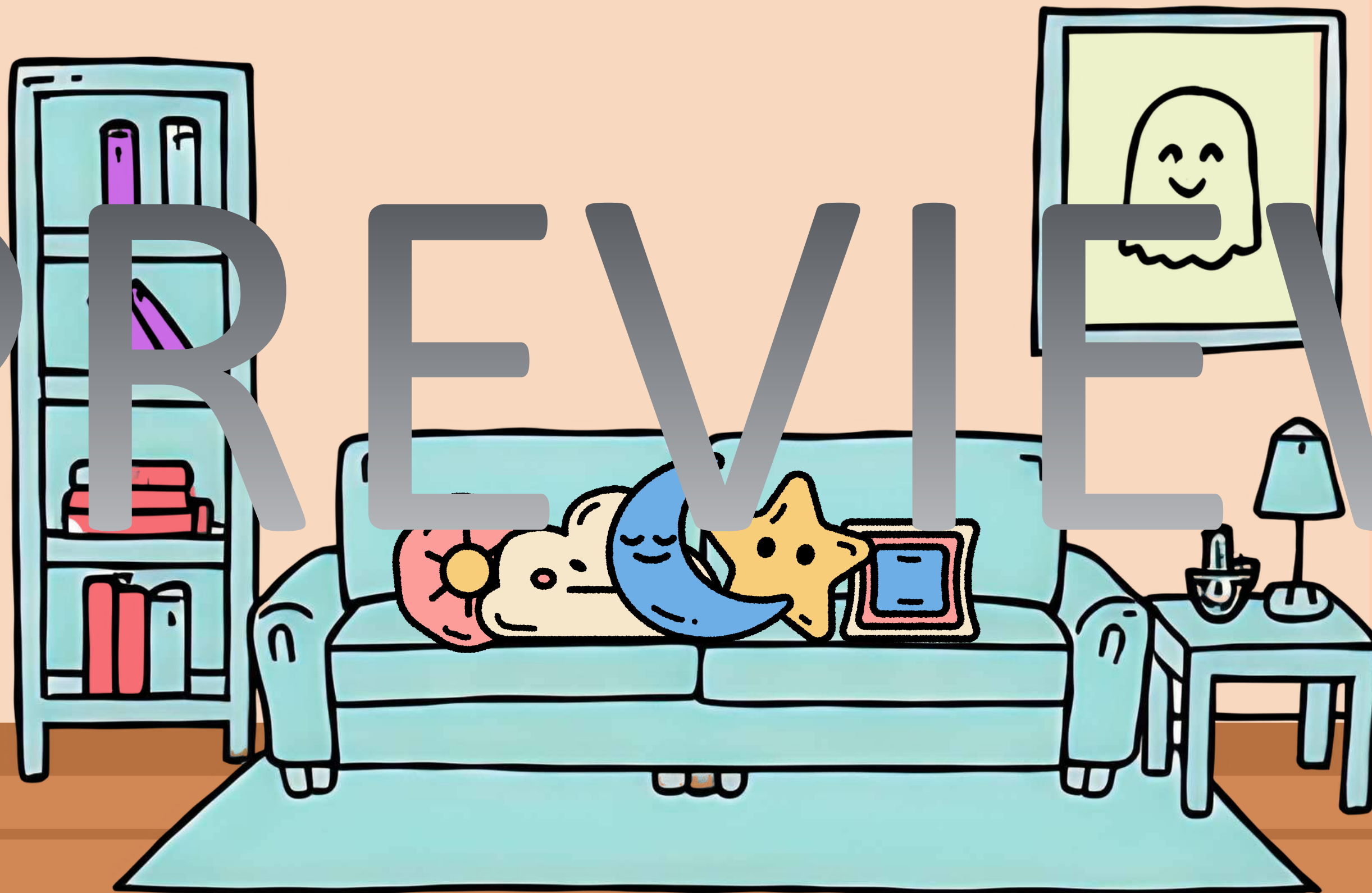
WHAT ROOM DOES
A GHOST NOT NEED?

PREVIEW



A LIVING ROOM!

PREVIEW



WHAT DO GHOSTS
EAT FOR DESSERT?

PREVIEW

4



ICE CREAM
(I SCREAM!)

PREVIEW



A dark, hooded figure stands on a beach, looking out at a stormy sea. The figure is silhouetted against the bright, turbulent water. The sky is dark and moody. The overall tone is mysterious and ominous.

WHAT DO YOU
CALL
A WITCH
AT THE BEACH?

PREVIEW

5

A person wearing a black hooded cloak stands in a dark, stormy sea. They are holding a large, multi-layered sandwich in front of them. The sandwich has a thick, golden-brown crust and is filled with various colorful ingredients, including green lettuce, red tomatoes, and yellow cheese. The background shows dark, choppy water and a dark, overcast sky. The overall mood is mysterious and whimsical.

A SAND-WITCH!

PREVIEW

WHAT DO
GHOSTS USE
TO WASH
THEIR HAIR?
PREVIEW



SHAM-BOO!

PREVIEW

Boo-til
from dusk till dawn





PREVIEW

WHAT'S A GHOST'S
FAVORITE RIDE AT
THE AMUSEMENT PARK?



THE ROLLER-GHOSTER!



PREVIEW



WHAT'S A SKELETON'S
FAVORITE INSTRUMENT?



THE TROM-BONE!

PREVIEW



WHAT DO YOU GET WHEN
YOU CROSS A VAMPIRE
AND A SNOWMAN?

PREVIEW



FROSTBITE!

PREVIEW

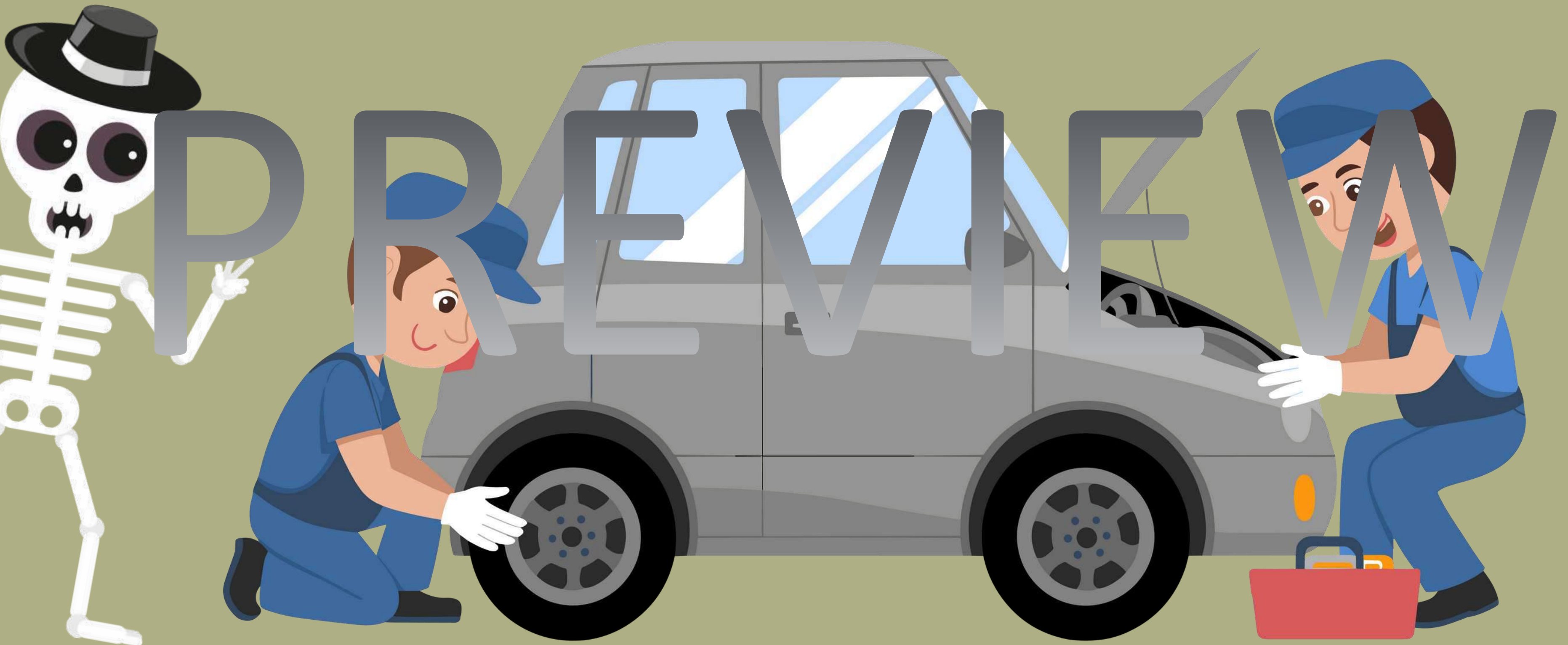


WHERE IS THE SKELETON GOING?

PREVIEW



TO THE BODY SHOP!



WHAT'S A VAMPIRE'S
FAVORITE FRUIT?

PREVIEW

11

A BLOOD ORANGE!

Take a bite...
I swear,
no fangs
today!

PREVIEW





PREVIEW